

# Fleetmon

fleet-management



# Fleetmon



heading south and heading north to port rostock

## Fleetmon

Fleetmon is always available to all customers, anytime and anywhere. It is your software tool to be informed and stay connected with your fleet .

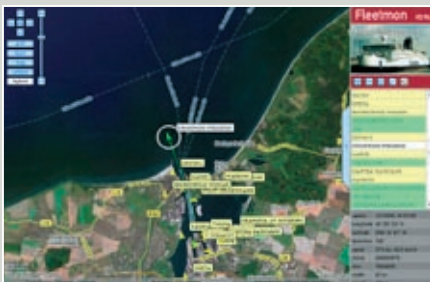
Vessel owners and fleet managers can track their ships from land or sea using an intuitive interface to provide a variety of information at real time for multiple vessels. Monitoring, planning and scheduling for the entire fleet is easily managed with common interface elements. Make use of our own AIS network with world wide coverage. Integrate Fleetmon into your existing management solution or use our webservice for access. Track your fleet from anywhere in the world, with a web-browser and Fleetmon.

### your advantages:

- manage and track multiple vessels
- view logs, comments and ship status reports
- get detailed voyage information
- record of past positions for long-term tracking available
- define multiple alert zones
- export trending and analysis data
- exception reporting
- electronic navigational charts, satellite or street map overlays
- use a google maps like interface
- integration of AIS-live-data and weather-reports
- standalone application provides brilliant, high-resolution digital display - ideal for lobbies, conference and emergency rooms on wide screens
- personal profil with saving of all individual parameters
- no software installation required ashore
- easy integration in corporate website or intranet management solution possible



SITE integration



listings



system overview

[www.cruise-systems.de](http://www.cruise-systems.de)

quality - designed and engineered in germany