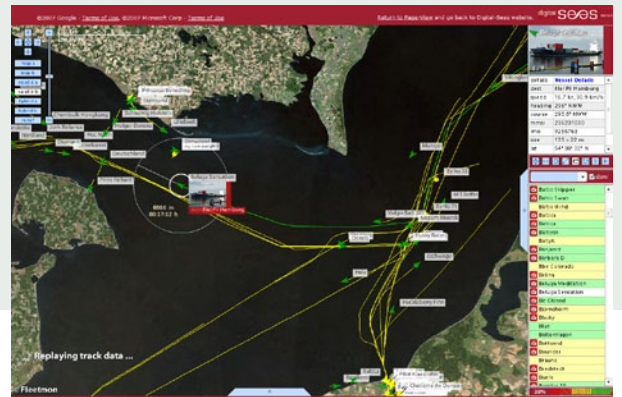


FleetMon

live vessel tracking and fleet monitoring





Tracking the AIDA Luna on its way to the port of Rostock.

FleetMon

Fleetmon

live vessel tracking and fleet monitoring

Fleetmon is your tool to be informed and stay connected with your fleet. Ship owners and fleet managers can track their fleet from land or sea using an intuitive and powerful interface.

Fleetmon provides them with real-time information on vessel position, speed, navigational status, dimensions, destination and estimated time of arrival - monitoring, planning and scheduling for the entire fleet made easy.

Track your ships from anywhere in the world with Fleetmon.

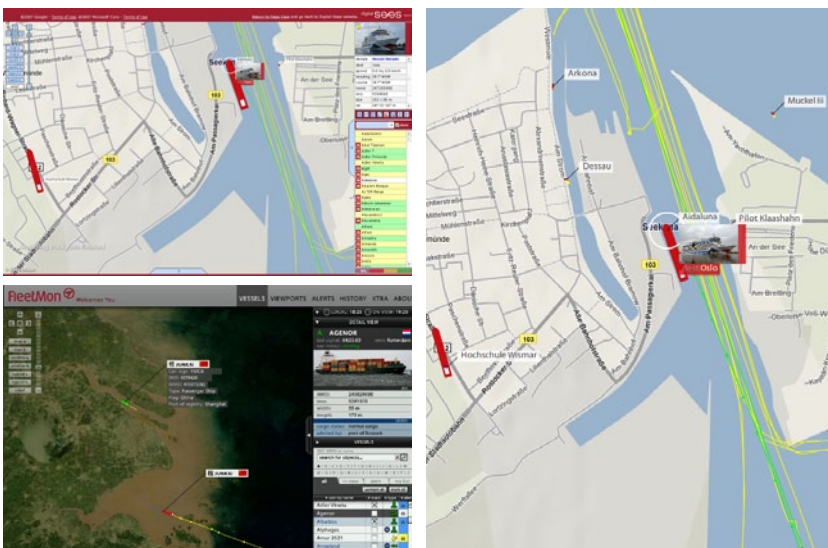
Fleetmon combines global satellite tracking and high-resolution near-shore AIS tracking seamlessly in a single view for your entire fleet! Satellite tracking does not need to blow your budget. It can be as affordable as a mobile phone plan! Let us show you how you can quickly enjoy the comfort of knowing where your ships are - anytime, anywhere.

Fleetmon is also an indispensable tool for the **maritime logistics business**.

Freight forwarders and agents can easily check vessel arrivals and port calls, port authorities can monitor marine traffic and are able to optimize scheduling, work-flows and processes. Be alerted of ship arrivals and research ship schedules. Follow ship movements on-screen or replay past routes.

Your advantages:

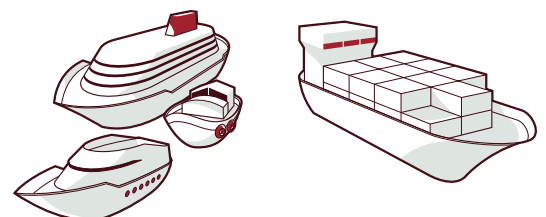
- » real-time world-wide tracking of your vessels' positions
- » continuous live display, no reloading - see vessels moor and unmoor, watch tugs and pilots do their work
- » cost-efficient global satellite tracking integrated seamlessly with near-shore AIS tracking in a single view
- » undelayed AIS data and vessel information from the extensive Digital-Seas.com network
- » detailed information on the voyage, last/current destination information, estimated time of arrival
- » vessel information and images for own and foreign vessels, indication of log and comments
- » record of past positions in long-term tracking
- » zoom down to ship dimensions
- » react on events such as mooring/unmooring
- » zone alerting and geofencing
- » intuitive interface with electronic navigational chart overlay
- » standalone application provides brilliant, high-resolution digital display
- » your personal profile saves your settings for the next session
- » easy integration into corporate web site



Track the route of the last 24 hours. Get visual ship details by using the zoom view.

Call us: +49 381 4903218

or mail to sales@cruise-systems.com



www.cruise-systems.com

Quality - designed and engineered in Germany

JAKOTA
Cruise Systems

D-18057 Rostock Leonhardstr. 22 fon: +49 381 4903218 fax: +49 381 4900054 e-mail: info@cruise-systems.com