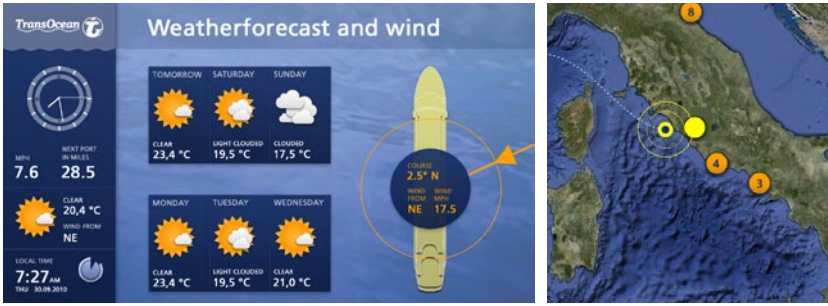


# OceanView

passenger information system





# OceanView

passenger information system

Oceanview is a flexible designed display system that provides cruise ship passengers with voyage progress and event information over the vessel's existing TV distribution system and screens. In addition, daily schedules, past tracks, weather information, product advertising and programmes can be part of the display cycle, there are no limits to your media formats.

The combination of different geographical maps, sea charts and satellite images gives an enjoyable impression of the cruise. Every screen is completely adapted to the ships corporate design guidelines. The system allows the integration of new textual and pictorial information which (prepared in PowerPoint) can be easily updated aboard. There is no limitation on the number of displaying devices, we support 4:3 and 16:9 screens at the same time.

The information can be shown either time based or set for specific geographic regions, so they can be displayed, for example, on departure, en-route, arrival and disembarkation. This mechanism ensures an almost unattended service, and...

...it's simply the best way to keep your guests informed.

Customers rely on our flexibility, eagerness and the ability to address their concerns. **Challenge us.**

your advantages:

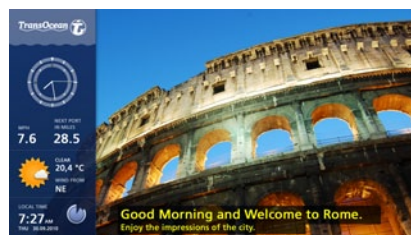
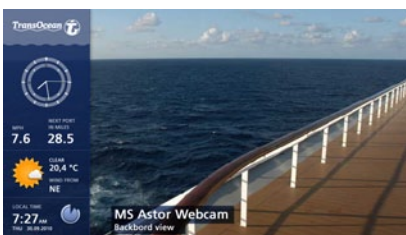
- » show vessel's real-time position on arbitrary maps
- » show voyage progress and estimated arrival information
- » custom 'on-route' presentations designed in ships CD
- » integrate live information from cameras and news-websites
- » update of every content directly aboard
- » no limits on numbers of displays and different display formats possible (4:3, 16:9)
- » select any desired distribution of information aboard due to innovative client-server-technology
- » collect and send cruise information of the ship to your home servers
- » runs unattended



time controlled info screens

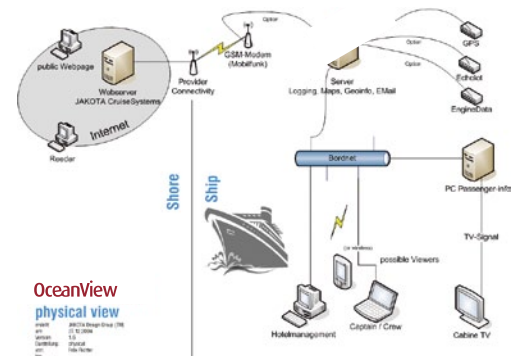


MS ASTOR



Call us: +49 381 4903218

or mail to [sales@crui-se-systems.com](mailto:sales@crui-se-systems.com)



[www.crui-se-systems.com](http://www.crui-se-systems.com)

Quality - designed and engineered in Germany



D-18057 Rostock Leonhardstr. 22 fon: +49 381 4903218 fax: +49 381 4900054 e-mail: [info@crui-se-systems.com](mailto:info@crui-se-systems.com)